

Adopt the organ donor card and always carry it with you!



PASSEPORT DE VIE



DON D'ORGANES
LA VIE CONTINUE



ORDER OF ORGAN DONOR CARDS



Quantity

Last name _____

First name _____

Address _____

Zip Code _____

City _____



FAQ

How do I become an organ donor?

There is no official organ donor list. You only need to fill in the organ donor card ("Passeport de Vie") and carry it with you at all times, i.e. in your wallet. It is very important to talk about your decision with your relatives, so that your last wish will be respected.

Is there an age limit for organ donation?

No, there isn't. The quality of the organs is decisive.

Which organs can be transplanted?

The organs being transplanted the most are the kidneys, the heart, the lungs and the liver.

Why is Luxembourg a member of Eurotransplant?

The 8 member states count together 136,6 million citizens. This ensures a high critical mass. The probability to find a compatible organ increases immensely.

Do you have further questions?

Visit us our website and social medias. You will find more information about organ donation and our next activities.

www.protransplant.lu



FIR LËTZEBUERGESCH HEI SCANNEN
FÜR DEUTSCH HIER SCANNEN
SCANNEZ ICI POUR LE FRANÇAIS
PARA PORTUGUÊS LÊ AQUI

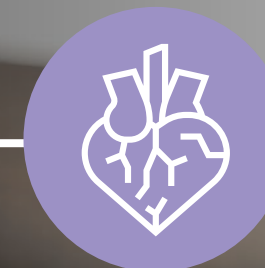
PROTRANSPLANT.LU
B.P. 1863
L-1018 Luxembourg

Infoline :
(+352) 691 53 53 53
Association sans but lucratif



Protransplant

ARE YOU AN ORGAN DONOR?



Take your decision now!

ORGAN DONATION SAVES LIVES!

PASSEPORT DE VIE
DON D'ORGANES
LA VIE CONTINUE



WHO ARE WE?



PROTRANSPLANT.LU is a non-profit association, which celebrated its 10th anniversary in October 2021. The association was founded by a group of transplant recipients, family members and nursing staff. The main goals are the promotion of organ donation in Luxembourg and the mutual help of those affected by organ donation, their families and people on a waiting list.

Our association has the honour to be under the patronage of TRH the Grand Duke and the Grand Duchess of Luxembourg. The association is a public registered charity since 2016.

Statistically, 6 people in Luxembourg die per year, because no compatible organ could be found in time. That's why **PROTRANSPLANT.LU** is committed in the promotion of organ donation in Luxembourg.



OUR MISSION?

- Promoting organ donation
- Mutual helping of people who received a transplant and those who are still on a waiting list
- Creating links between all national and international associations pursuing the same goals
- Supporting and accompanying affected families



World Organ
Donation Day
**17th
October**

HOW DO I BECOME AN ORGAN DONOR?



THANK YOU!



You can support our association by donating money or becoming a member: annual fee from 10 €

BCEE LU06 0019 3755 0395 4000

STATEMENT

Your decision concerning organ donation is respectable and will be respected. Whether you're in favour or against organ donation, it is important to communicate your decision and to talk about it with your relatives. Always carry the organ donor card with you. It will attest to your opinion.

Your decision will simplify the work of the medical teams, as the procedures of organ donation are a race against time. By taking your own decision, you will relieve your relatives of an enormous emotional burden that often takes place under very tragic and unexpected circumstances.



Order more organ donor cards for free by filling in this postcard and sending it to us.



PRIORITAIRE
IBRS/CCRI no 14572

PORT PAYE
PAR LE
DESTINATAIRE

REPOSE PAYEE / REPLY PAID
LUXEMBOURG

PROTRANSPLANT.LU

ENVOI-REPOSE 14572
L – 3208 BETTEMBOURG

